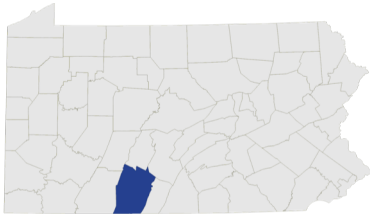


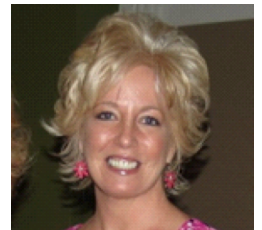
# My Story



## Bringing Visitors to Our Town Bedford Heritage Trail

*By Barb Diehl, Bedford Borough Manager*

***"The trail has made a big impact on our community. It has added an amenity to our town that people reference with pride."***



The Bedford Heritage Trail, which opened in September 2015, connects the Omni Bedford Springs Resort and Spa to downtown Bedford. The trail has made a big impact on our community in

many ways. It is a very popular venue for local walkers and joggers. It has increased the number of Omni Bedford Springs Resort guests who visit downtown. It has opened up the Resort's rustic trail system to local hikers and mountain bikers. It has provided a safe way for bicyclists to avoid a narrow and dangerous section of State Route 220. It has added an



**Keystone Fund Investment:** \$473,700

**Total Public/Private Investment:** \$1.1 million

amenity to our town that people reference with pride.

The popularity of the trail has increased the desire in the community to extend the trail north from Ft. Bedford Park in

downtown Bedford to Old Bedford Village (a living history museum) and Friendship Village (a popular campground). The extension will bring the total length of the trail to approximately 5 miles. The planning for this extension has begun.

**Learn more at [KeystoneFund.org](http://KeystoneFund.org).**