

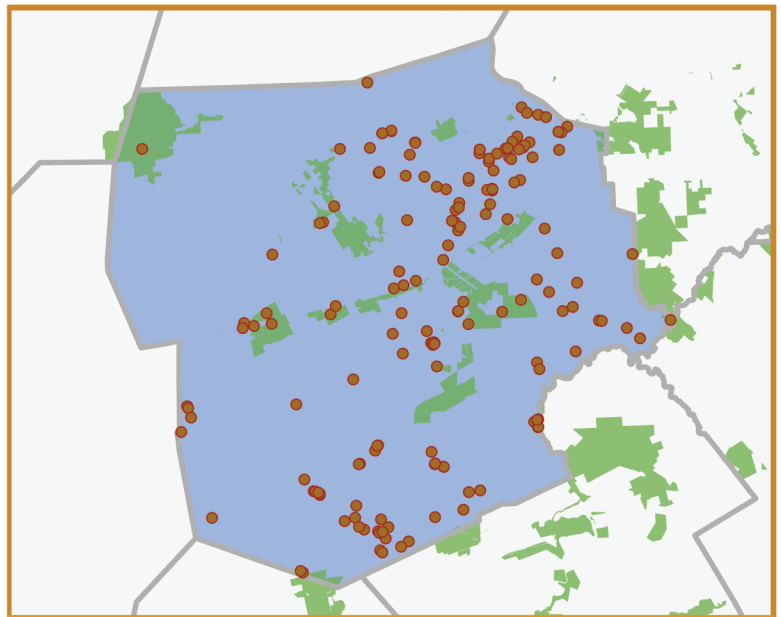
Since 1993, delivering  
**IMPROVEMENTS THAT LAST**



- High-impact investments in all **67 counties**, with **millions** committed in every legislative district.
- Each Keystone Fund dollar leverages **\$3.13** in **direct, local investments** for parks, trails, community greenspaces & libraries.
- Transparent spending & competitive project selection **maximize public benefit.**



[keystonefund.org](http://keystonefund.org)



## IMPACT REPORT

# Luzerne

### TOTAL KEYSTONE FUND INVESTMENTS

# \$53.0M

includes grants and, where applicable, investments in state parks & forests and SSHE universities

# 190

 grant projects including local parks, recreation & conservation

### SAMPLING OF PROJECTS

- Earth Conservancy at Mocanaqua Fee Acquisition (1006564)
- Haas Property Acquisition - Bear Creek Preserve (7358)
- Bear Creek Camp Easement (8300)
- Theta Lands: Phase II (6484)
- Little Wilkes-Barre Mountain Property - Lackawanna State Forest Addition (1101115)
- Mack Property Acquisition (1005371)
- Blue Ridge Acquisition (8318)
- Arbutus/Basler Acquisition (1002933)
- Huntsville Reservoir Conservation Easement (2004780)
- American Legion Conservation Easement (7938)

An interactive map and complete list of projects in this district are available online at [keystonefund.org](http://keystonefund.org).