

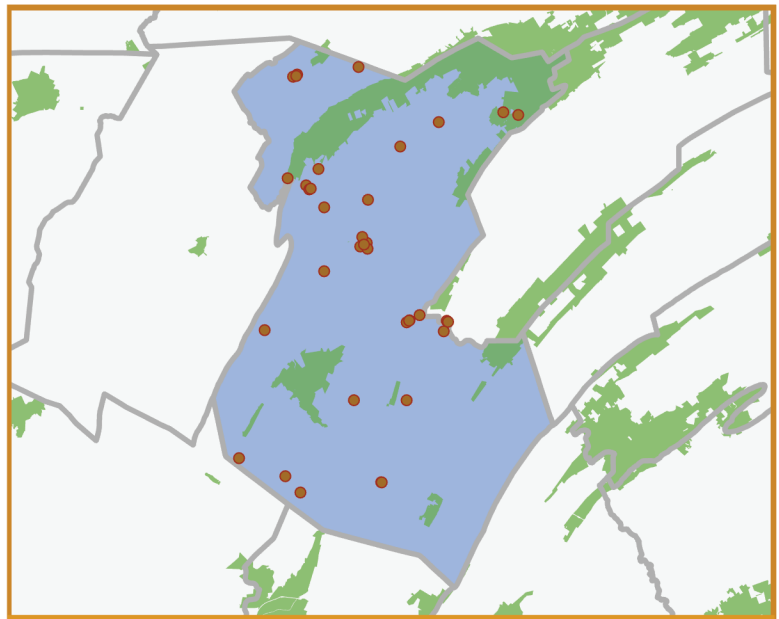
Since 1993, delivering
IMPROVEMENTS THAT LAST



- High-impact investments in all **67 counties**, with **millions** committed in every legislative district.
- Each Keystone Fund dollar leverages **\$3.13** in direct, local investments for parks, trails, community greenspaces & libraries.
- Transparent spending & competitive project selection maximize public benefit.



keystonefund.org



IMPACT REPORT Huntingdon

TOTAL KEYSTONE FUND INVESTMENTS

\$9.0M

includes grants and, where applicable, investments in state parks & forests and SSHE universities

45 grant projects including local parks, recreation & conservation

SAMPLING OF PROJECTS

- Suppes Trust Property (2912)
- Huntingdon Community Center Swimming Pool (3854)
- Rothrock State Forest Trails- Greenwood Furnace (2012091)
- Path Estate Acquisition (4453)
- Thousand Steps (2201)
- Juniata River Water Trail Access - Phase II Mapleton (1008416)
- Upper Juniata Public Access Easements (9587)
- Juniata River Water Trail Access - Phase II Mt. Union (1008417)
- Melvin Lane Nature Park and River Access Project

An interactive map and complete list of projects in this district are available online at keystonefund.org.