

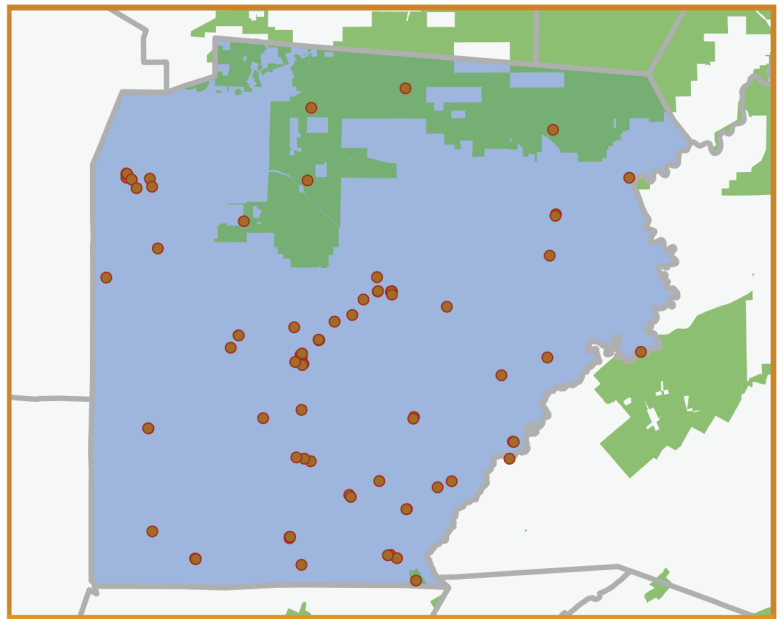
Since 1993, delivering
IMPROVEMENTS THAT LAST



- High-impact investments in all **67 counties**, with **millions** committed in every legislative district.
- Each Keystone Fund dollar leverages **\$3.13** in direct, local investments for parks, trails, community greenspaces & libraries.
- Transparent spending & competitive project selection maximize public benefit.



keystonefund.org



IMPACT REPORT

Clearfield

TOTAL KEYSTONE FUND INVESTMENTS

\$10.5M

includes grants and, where applicable, investments in state parks & forests and SSHE universities

83

grant projects including local parks, recreation & conservation

SAMPLING OF PROJECTS

- Joseph & Elizabeth Shaw Public Library
- Memorial Park Swimming Pool (174)
- Showers Field - Phase 2 (1005909)
- Houtzdale-Woodward Recreation Park (1101512)
- Dubois Memorial Park (1101690)
- Sandy Lick Creek Recreation Area Trails - Phase II (1000425)
- Lawrence Township - Lawrence Township Recreational Park-Phase I (340)
- Upper Witmer Park (9270)
- Sandy Lick Creek Recreation Area (8882)
- Memorial Park (1008316)

An interactive map and complete list of projects in this district are available online at keystonefund.org.