

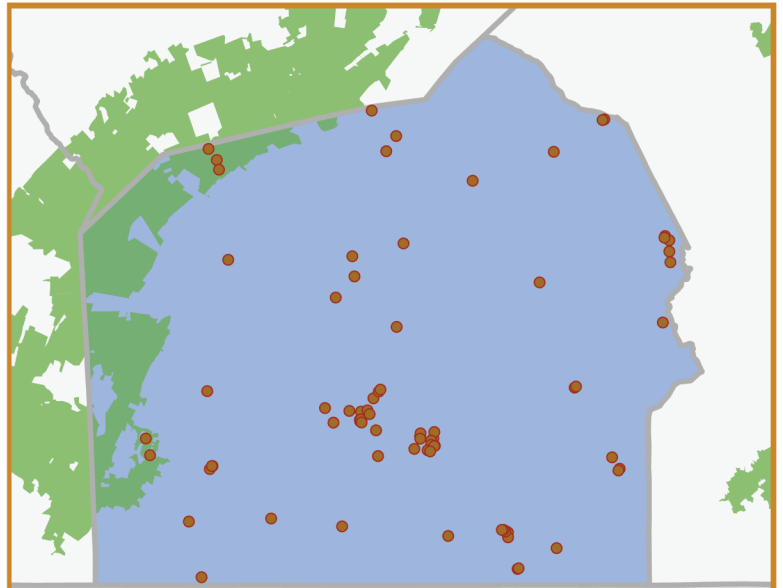
Since 1993, delivering
IMPROVEMENTS THAT LAST



- High-impact investments in all 67 counties, with millions committed in every legislative district.
- Each Keystone Fund dollar leverages \$3.13 in direct, local investments for parks, trails, community greenspaces & libraries.
- Transparent spending & competitive project selection maximize public benefit.



keystonefund.org



IMPACT REPORT

Adams

TOTAL KEYSTONE FUND INVESTMENTS

\$8.7M

includes grants and, where applicable, investments in state parks & forests and SSHE universities

63

grant projects including local parks, recreation & conservation

SAMPLING OF PROJECTS

- Strawberry Hill Property - Michaux State Forest Addition (1101142)
- Battlefield Military Museum Acquisition (2003072)
- Michaux ATV Trails (BOF243)
- Littlestown Community Park (2004589)
- Penn Forestry Conservation Easement (7651)
- Gettysburg Inner Loop - Phases A1 and A2 (1008057)
- Inner Loop Bicycle Trail- Phase B2 (2002390)
- Germany Township Park- Phase 2 (2004600)
- Conewago Woods Acquisition (2001566)
- Plum Creek Park- Phase 2 (2006685)

An interactive map and complete list of projects in this district are available online at keystonefund.org.