

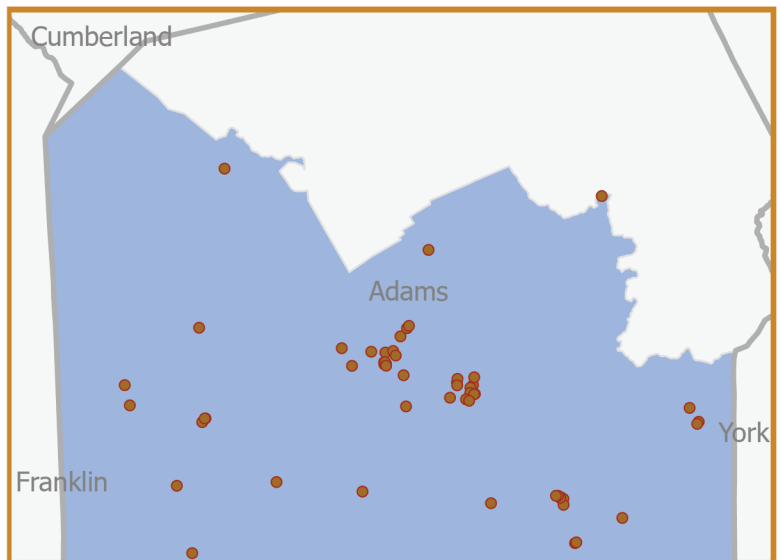
Since 1993, delivering  
**IMPROVEMENTS THAT LAST**



- High-impact investments in all **67 counties**, with **millions** committed in every legislative district.
- Each Keystone Fund dollar leverages **\$3.13** in direct, local investments for parks, trails, community greenspaces & libraries.
- Transparent spending & competitive project selection maximize public benefit.



[keystonefund.org](http://keystonefund.org)



## IMPACT REPORT HOUSE DISTRICT 91

TOTAL KEYSTONE FUND INVESTMENTS

**\$6.6M**

includes grants and, where applicable, investments in state parks & forests and SSHE universities

**45** grant projects including local parks, recreation & conservation

### SAMPLING OF PROJECTS

- Strawberry Hill Property – Michaux State Forest Addition (1101142)
- Battlefield Military Museum Acquisition (2003072)
- Littlestown Community Park (2004589)
- Penn Forestry Conservation Easement (7651)
- Gettysburg Inner Loop - Phases A1 and A2 (1008057)
- Inner Loop Bicycle Trail- Phase B2 (2002390)
- Germany Township Park- Phase 2 (2004600)
- Plum Creek Park- Phase 2 (2006685)
- Spangler Trail (1101039)
- Great Conewago Presbyterian Church

An interactive map and complete list of projects in this district are available online at [keystonefund.org](http://keystonefund.org).